

# 2025



Class Teacher: *Mrs Bonnie Dow*

# Welcome to LPS

# Welcome to 3/4D

What I like to share...my favourite quote



Popcorn is prepared  
in the same pot,  
in the same heat,  
and in the same oil.  
Yet the kernels do not  
pop at the same time.

Don't compare your child  
to other children,  
their turn to pop up is coming.

# Year 3-6 Team 2025



## Assistant Principals

K-2

Deborah Rainford

Stage 2

Athina Malakonakis

Stage 3

Gregg Walker

## Stage 2 Teachers

**2/3M** - Mrs Malakonakis

**3/4D** - Mrs Dow

**3/4A** - Miss Actypis

## Stage 3 Teachers

**4/5H** - Mrs Harris

**5/6R** - Mrs Reberger

**5/6W** - Mr Walker

# Specialist and Support Team

- Assistant Principal Curriculum and Instruction - Mrs Loh
- Teacher Librarian - Mrs Dufty
- EAL/D - Ms Jones
- LaST - Ms Maloney
- RFF - Mrs Androulakis
- SLSO - Mrs Targett, Mrs Ryan and Mrs Wootton
- Student Welfare and Support Officer - TBC
- School Counsellor - Ms Burgess

Year 1 &



*The Support Team works with our students to provide support in learning and wellbeing. A parent referral is needed to access wellbeing support.*

# Class

## **Tuesday:**

Special Religious Education/Ethics

# specifics:

## **Wednesday:**

Library - Bring Library Bag

## **Thursday:**

PSSA Training 8:10am

Fitness (students to wear sports uniform)

**TERM 1: Tae Kwon Do**

## **Friday:**

Training, Performing and Strings Band

School sport and PSSA (sports uniform)



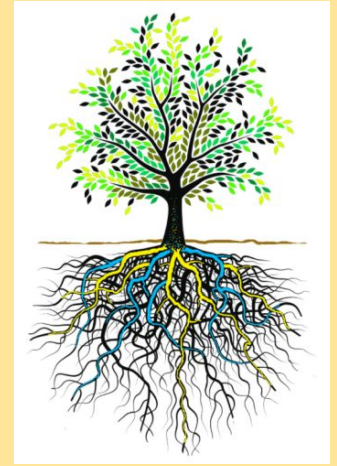
## How to contact me:

1. Small things / quick questions = I am more than happy to be approached directly in the morning.
2. Email or call the school and they will forward the message to me. Please allow a few hours or even a day or so before I respond - please state in the email or in the phone call if it's urgent, in which case I will get back asap.

Phone: 9153 9843

Email: [lugaro-p.school@det.nsw.edu.au](mailto:lugaro-p.school@det.nsw.edu.au)

# Curriculum



Please follow the above link to learn more about the primary curriculum.

# Curriculum Key Learning Areas (KLAs)

## English

- Reading Fluency and Comprehension
- Phonic Knowledge, Spelling and Vocabulary
- Creating Written Texts
- Oral Language and Communication
- Responding to Literature
- Handwriting and Digital Technologies

## Mathematics

- Number and algebra
- Measurement and space
- Statistics and probability
- Working Mathematically

## Science

- Through studying Science and Technology students explore scientific and technological concepts and gain knowledge and understanding of the world. They develop skills in conducting scientific investigations and designing and producing solutions through learning about the Living World, Material World, Physical World, Earth and Space, and Digital Technologies.

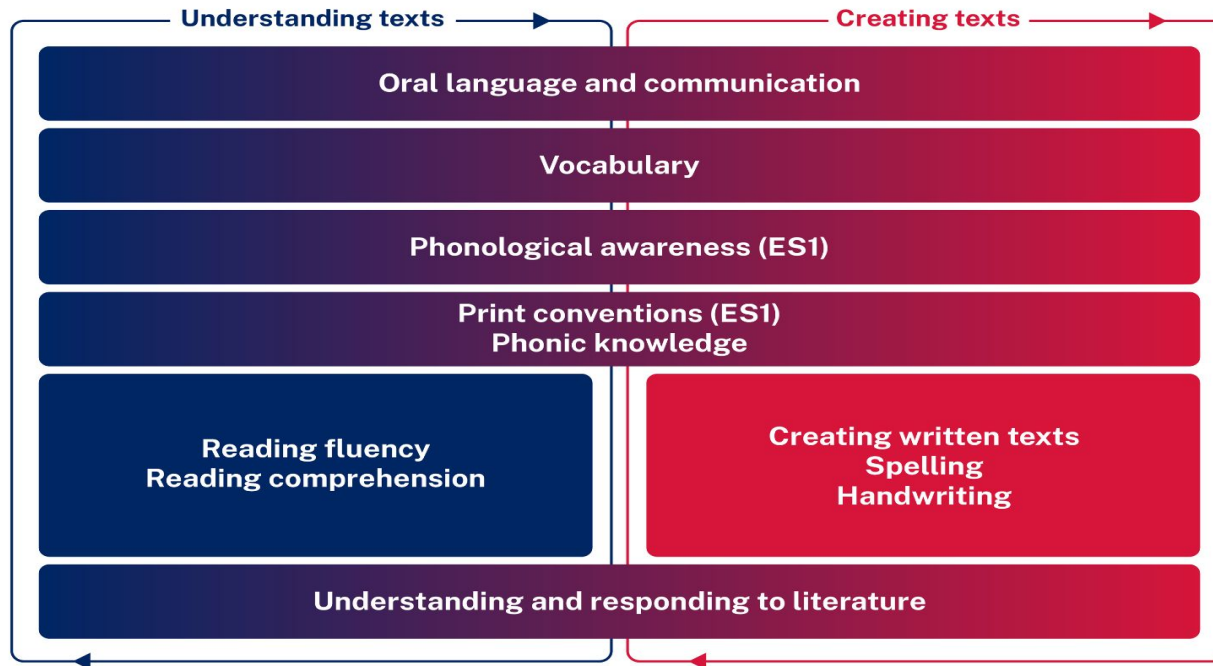




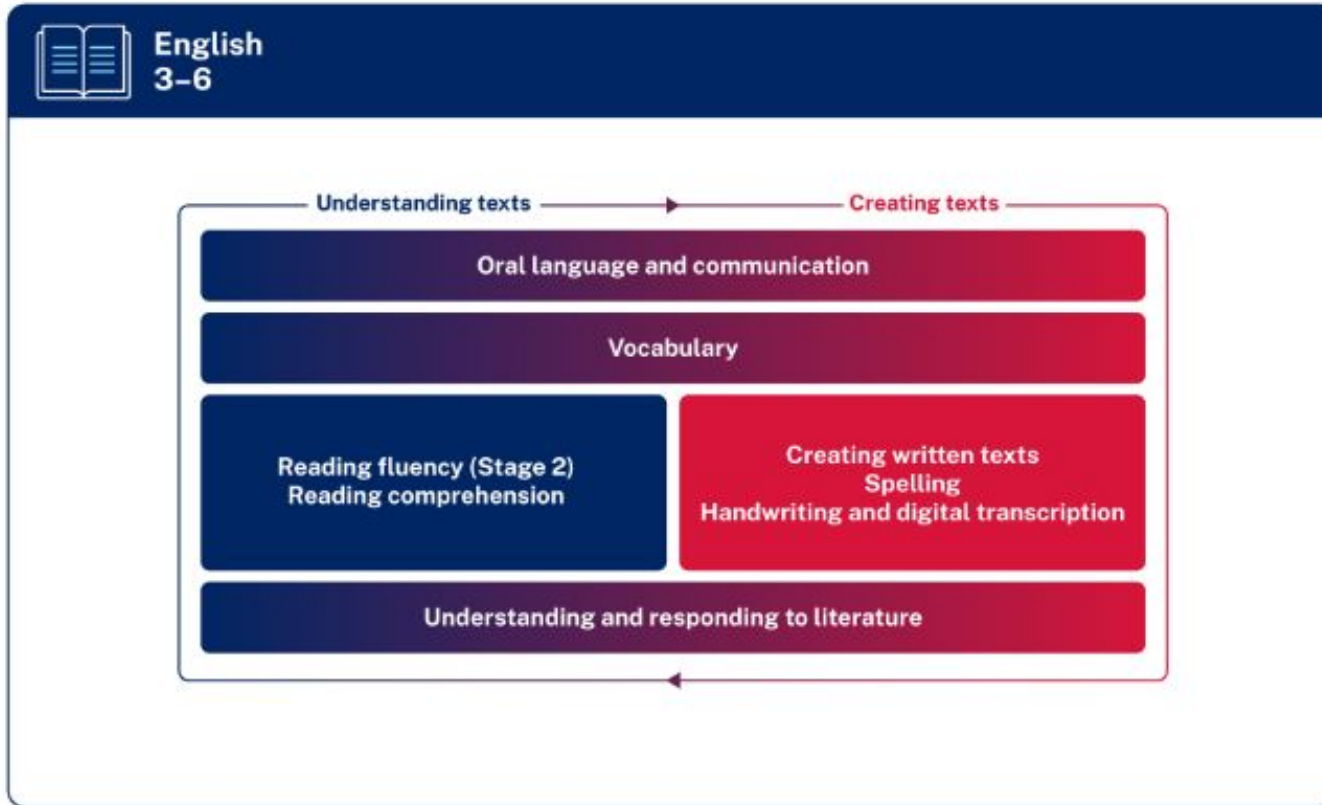
# Curriculum Reform - K-2 English



English  
K-2



# Curriculum Reform - 3-6 English



In 3/4D these English lessons are taught Monday to Thursday every morning to recess

## How does English look like in 3/4D? In a nutshell

Monday - Thursday

**Component A -**

**Spelling / Vocabulary-** spelling words based on vocabulary from The Thing About Oliver as well as following the DoE spelling syllabus eg this week's focus has been on long and short o.

We learn about morphology (how can we change the word by adding a suffix or prefix), orthography, segmenting words into phonemes and syllables to help spell; words are grouped according to difficulty

**Reading Fluency / Comprehension-** read excerpts of the text to improve expression and comprehension of the text

**Creating written texts** - writing sentences that are grammatically correct

**Component B - Responding to Literature** - essentially learning how to write a narrative by learning about characterisation, complication and resolution

# Curriculum Reform - K-2 Mathematics



## Mathematics K-2

Working mathematically through communicating reasoning, understanding and fluency, and problem solving

**Number  
and algebra**

Representing  
whole numbers

Combining  
and separating  
quantities

Forming  
groups

**Measurement  
and space**

Geometric  
measure

2D spatial  
structure

3D spatial  
structure

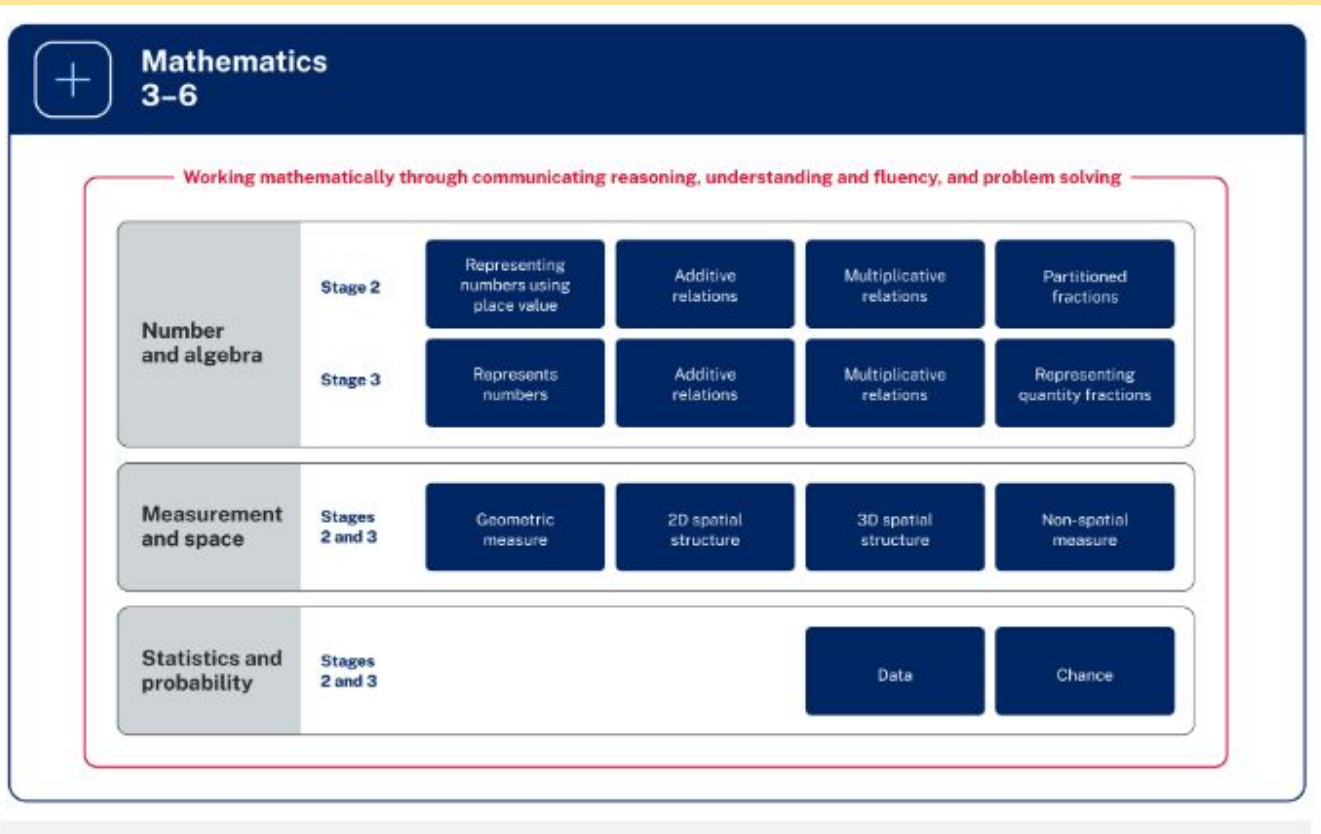
Non-spatial  
measure

**Statistics and  
probability**

Data

Chance

# Curriculum Reform - 3-6 Mathematics



- *Maths lessons in 3/4D are taught Monday to Friday following our new curriculum.*
- ***Differentiation occurs within these lessons***

## How does maths look like in 3/4D? In a nutshell:

**Monday - Friday after recess**

**Number & Algebra** - whole numbers, addition, subtraction, multiplication and division; fractions following explicit teaching concepts

le I do, we do and you do - gradual release of responsibility

eg this week's focus has been on representing, ordering and re-grouping 3-4 digit numbers

Being fluid with numbers has been the focus eg knowing that 345 is also 34 tens and 5 ones.

**Measurement & Space** - length, area, volume, 2D shapes and 3D objects, telling time and reading calendars and timetables

**Statistics & Probability** - Data (collecting and representing data) and chance

**Differentiation** ensures I am meeting where your child is at.

# Curriculum Key Learning Areas (KLAs)

## History

- The aim of the History syllabus is to stimulate students' interest in and enjoyment of exploring the past, to develop a critical understanding of the past and its impact on the present, to develop the critical skills of historical inquiry and to enable students to participate as active, informed and responsible citizens.

**Semester One**  
**Community and**  
**Remembrance**

## Geography

- The aim of Geography is Years K - 10 is to stimulate students' interest in and engagement with the world. Through geographical inquiry they develop an understanding of the interactions between people places and environments across a range of scales in order to become more informed, responsible and active citizens.



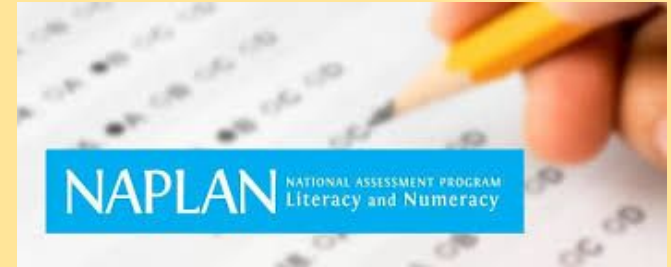
**Semester Two**  
**How are places**  
**the same and**  
**different?**





# Naplan 2024

## Yr 3 & 5



Where possible, schools may arrange for individual students who are absent at the time of testing to complete missed tests at another time during the relevant testing window.

**NAPLAN 2025 Online tests:**  
12th - 24th March (Term 1 Weeks 7 - 9)

# Book Covering?

Yes?

No ?

# Check In Assessment Term 3 2024

Check-in assessments are online assessments for students in Years 3 to 9.

All students complete a reading assessment and a numeracy assessment. Year 6 students also complete a writing task.

## Term 3

- Years 3 and 4 complete reading and numeracy assessments

The background is a light beige color with a repeating pattern of white line-art icons. These icons include various school supplies such as pencils, scissors, a backpack, a book, a pencil sharpener, a stapler, a paper airplane, and a ruler. There are also mathematical symbols like plus (+), minus (-), multiplication (x), and division (÷) signs, as well as letters like 'B' and 'a' in different fonts and sizes.

# General Information

# Student Wellbeing

## Positive Behaviour for Learning (PBL)

- Whole school approach to setting the expectations for student behaviours
- Teachers will be giving explicit lessons on the behaviours that are expected of them
- Each week there will be a focus area for the whole school

The expectations are:

- ★ Learn Always
- ★ Participate Safely
- ★ Show Respect



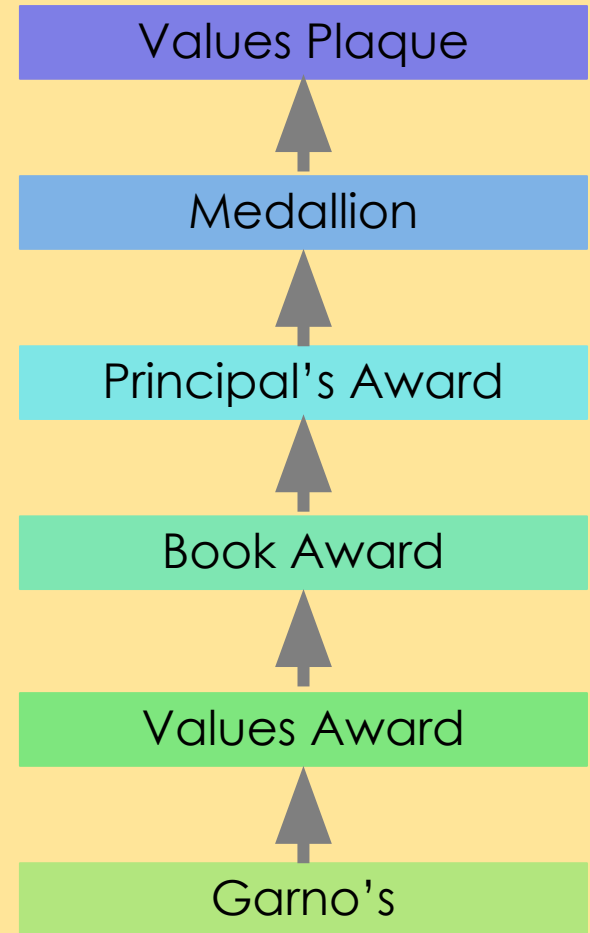
# Student Wellbeing

- Positive behaviour is rewarded by **Blue, Yellow** and **Green Garnos** that represent (*Learn Always, Participate Safely* and *Show Respect*)
- 10 **Garnos** = 1 **LPS Values Award**
- 5 **LPS Values Awards** = 1 **Principal's Award**
- Every set of 3 **Principal's Awards** = 1 **Book Award**
- 5 **Principal's Awards** = 1 **Values Medallion**
- 10 **Principal's Awards** = 1 **LPS Excellence Plaque**



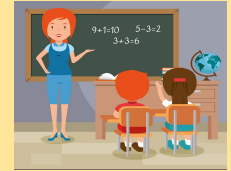
# Wellbeing at a Glance

- School Core Values (LPS)
- Student Expectations Matrix
- Specific lessons in class
- Bounce Back - a resilience program
- Anti Bullying - even terms
- Mindfulness



# Student Behaviour

- Our staff hold high expectations for student learning, wellbeing and behaviour
- A new DoE Behaviour Policy has clear guidelines around student safety, respect and engagement, and impact on teaching and learning.
- Our approach is, **Positive, Safe, Respectful, Inclusive**
- We establish, promote and reinforce expectations for behaviour in class, on the playground and around the school
- We prevent and respond to student behaviours of concern
- Restorative practices and reflection



*Parents and carers play an important role in our school community. Student wellbeing is enhanced when the school and families work in partnership. The Community Charter outlines the responsibilities of parents, carers, educators and school staff in NSW public schools to ensure our learning environments are collaborative, supportive and cohesive.*



# Mobile Phones, Smartwatches and Devices

The Department of Education has clear guidelines around the use of mobile phones and smartwatches. Please see link below.

[Student Use of Mobile Phones in Schools](#)

Our school's expectations are outlined in our *Mobile Phone and Smartwatch Policy Agreement*

This applies to all devices where communications and recordings may be made, including junior versions of a smartwatch, and walkie talkies.

**LUGARNO**  
*Public School*

**Mobile Phone and Smart Watch Policy Agreement**

The safety and security of students as they travel to and from school is a genuine concern at Lugarno Public School. We understand that many students carry mobile phones or smart watches to use outside of school for contacting parents and caregivers. However, as the majority of these devices are capable of accessing the internet we must treat them accordingly.  
The devices in question are those that:

- Have a sim card and are able to contact people without the use of school wifi.
- Are internet enabled (i.e. 3G, 4G 5Getc).

**Student Responsibilities**

1. The student takes full responsibility for his or her phone or Smartwatch. While every effort is made to ensure their security, the school and its staff take no responsibility for loss, theft or damage to the phone either at school or in travel to and from school.
2. The student is responsible for the proper care of his or her phone or Smartwatch including any costs of repair, replacement or any modifications needed to use the device at school.
3. The student will hand their phone or Smartwatch into the school office upon arrival (between 8:30am & 9:00am) in a small pencil case sized bag with the student's name on it provided by the student. Phones and Smartwatches are to be switched to silent. Students must collect their phone or Smartwatch from the front office at the end of the day.

**Usage**

4. The student agrees to respect the right to privacy of others and will not record audio, video, or take images of other students. The student is reminded that filming or sharing images of others against their will is illegal.
5. The school reserves the right to inspect a student's phone or Smartwatch if there is reason to believe that the student has violated school policies, school rules or has engaged in other misconduct if caught using the device at school.
6. Violations of school or class rules involving a student's phone or Smartwatch may result in disciplinary action.

As a student I understand and will abide by the above conditions. I further understand that any violation of the above may result in disciplinary action.

As a parent, I understand that my child will be responsible for abiding by the above conditions. I have read and discussed them with her/him and they understand the responsibilities they have in the use of their personal device.

I give my child (name) \_\_\_\_\_ of class \_\_\_\_\_ permission to bring the following mobile device to school each day \_\_\_\_\_

Device Serial Number \_\_\_\_\_

Device Phone number \_\_\_\_\_

Student's Signature Date \_\_\_\_\_

Parent's Signature Date \_\_\_\_\_

# Non- DoE Online Gaming - Social Media - Messaging

We understand that a number of Stage 1 and 2 children enjoy playing and communicating with their friends through a range of online apps and games at home.

Whilst student use of these platforms is at the discretion of parents, we ask that you please be **hyper vigilant** and closely monitor images, text and audio while your children engage with these.

Unfortunately, problems that arise online outside of school hours, flow back into school resulting in unwanted learning disruptions.

Please note that official DoE Aps such as *Google Classroom* and *Minecraft for Education* are closely monitored.

# Making Appointments

- Please see the class teacher first for any issues of concern
- An appointment may be made by contacting the school.



## Absences

- SENTRAL will automatically push out unexplained attendance notifications. Please ensure you have downloaded the *SENTRAL for Parents* App and update your details via the office. Please see or call our office for SENTRAL help.
- A note explaining the reason for your child's absence is required within 7 days
- These notes may be submitted online via SENTRAL or to your child's teacher.
- Attendance is regularly monitored by the school and a *Home-School Liaison Officer*

### Partial Absences

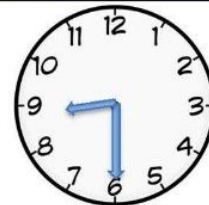
- Please try to avoid, where possible, appointments during school hours
- It is also important to be punctual to school

# EVERY MINUTE COUNTS....

When your child misses just...	that equals...	which is...	and therefore, from Kindy to Year 12, that is...
10 minutes a day	50 minutes of learning each week	Nearly 1½ weeks per year	Nearly ½ a year of school
20 minutes a day	1 hour and 40 minutes of learning each week	Nearly 2½ weeks per year	Nearly a year of school
½ hour a day	½ a day of learning a week	4 weeks a year	Nearly 1 ½ years of learning
1 hour each day	1 whole day of learning each week	8 weeks per year or nearly a term a year.	Over 2 ½ years of learning

*Your child's best learning time is at the beginning of the day...*

**Check the time  
your school  
starts.  
DON'T BE LATE!**



# Communication

- Lugarno Public School Facebook page - regularly updated with the most current information, news and events
- Fortnightly Newsletters-online (Thursdays)
- LPS Website
- *SENTRAL for Parents App*



# Payment Policy

- Payments may be made online (see school website)
- **A black letterbox is at the front office; any money/notes are to be dropped off there at the beginning of the day**
- Due date is strictly adhered to
- Please contact school immediately if unable to pay to avoid disappointment

# Interviews and Reports

- Interviews will be in Weeks 10 and 11, Term 1
- Semester One Reports sent home at the end of Term 2
- Semester Two Reports sent home at the end of Term 4
- Contact the class teacher for an appointment, if there are any concerns with your child's progress or wellbeing.



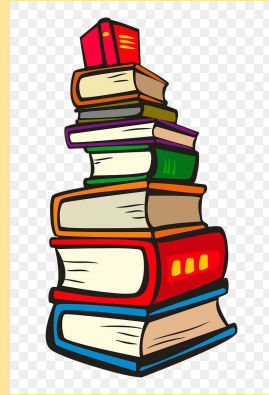
# P & C

- The P & C is a group of parents and carers who volunteer their time and skills to assist the Principal and the school in order to enhance the school experience and learning environment for students. This involves running the school canteen, uniform shop and numerous fundraising activities.
- Please see the P&C's fortnightly newsletters for current events and information, and if you would like to join.
- Meetings are held on the **third Wednesday of each month** commencing at 7pm. Please check the school newsletter and website for meeting locations.



# Homework - Reading and Mathletics

- We encourage you to regularly listen to your child read aloud to you.
- Students who have been assessed as *fluent*, may choose their own suitable text to read. Otherwise, teachers will help students choose appropriate texts.
- We read everyday at school and encourage our students to bring in, or borrow from the library, quality literature that is also read at home each night.
- *Mathletics* activities will be assigned and will align with concepts taught in class. There will be 5-10 activities assigned a fortnight.
- Class and Specialist Teachers may also post updates and learning information on Google Classroom.





**Any Questions?**

